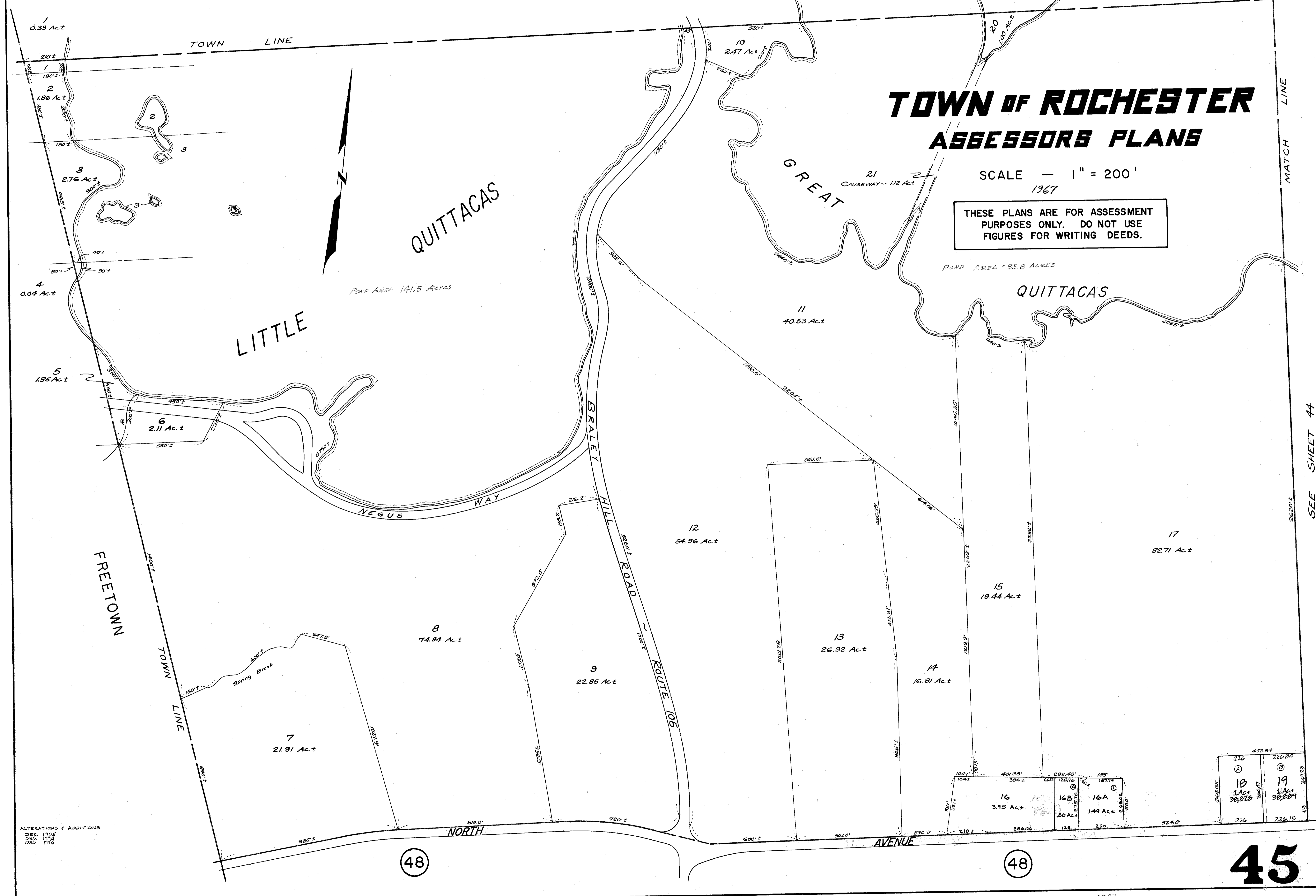


12

MIDDLEBOROUGH

GREAT ISLAND



TOWN OF ROCHESTER

ASSESSORS PLANS

SCALE — 1" = 200'
1967

THESE PLANS ARE FOR ASSESSMENT PURPOSES ONLY. DO NOT USE FIGURES FOR WRITING DEEDS.

POND AREA = 95.8 ACRES

ALTERATIONS & ADDITIONS
DEC. 1965
DEC. 1966
DEC. 1967

(48)

(48)

45

SEE SHEET 44

REVISED DEC 1968
SIBBETT'S ENGINEERING CORP.
NEW BEDFORD, MASS.