

ALTERNATIVE A

MATCH LINE A-A

PROPOSED 4 BEDROOM SINGLE FAMILY DWELLING
 TOP FOUND. EL.=38.5
 CELLAR FL. EL.=31.0

GARAGE

PROPOSED 20' x 40' INGROUND SWIMMING POOL

PROPOSED PAVED DRIVEWAY

PROJECT BENCHMARK
 TOP OF STAKE #7ACK
 EL.= (NA1068)

PERMANENT MARKERS TO BE PLACED AT LIMITS OF CLEARING CONSISTING OF 2-3' BOLLERS AT 20' P.C. EVERGREEN TREES AT 20' O.C., A SPLIT RAIL FENCE OR ANY OTHER METHOD AS APPROVED BY THE CON. COM.

PROPOSED RIVERFRONT ALTERATION AREA = 4,535 SQ. FT.

EROSION CONTROL = SITUATION FENCE STRAW MATSIES or SILT SOCKS 1:120

EDGE EXPOSURE REVEALED WETLAND DELINEATED FLAGGED BY LEC ENVIRONMENTAL CONSULTANTS, INC.

MEAN ANNUAL HIGH WATER LINE FLAGGED BY LEC ENVIRONMENTAL CONSULTANTS, INC.

SHERMAN BROOK

LOCATION OF CENTERLINE OF BROOK NOT BY SURVEY APPROXIMATED FROM PLANS OF RECORD

PORTION OF LOT #2, MAP #30 LOT #2 PLAN BOOK 62 PAGE 305 N/F MARK SOLLAUER & SANDRA M. SOLLAUER

MAP 30A LOT 41 N/F RANDOLPH M. & BONNIE L. BORTWICK

MAP AREA LOT #2 N/F SEREN L. & JANE M. ROBBINS

ANR LOT #2-3 - OWNER CLAPP HOMEREE TRUST

ANR LOT #2-2 - OWNER CLAPP HOMEREE TRUST

25' WIDE UTILITY EASEMENT

200' RIVERFRONT EAS.

40' SIDE SETBACK LINE

25' NO ACTIVITY ZONE

25' NO ACTIVITY ZONE

200' RIVERFRONT BOUNDARY

10' WIDE RIVERFRONT ZONE

MAHW A121

MAHW A120

+ 25.9

MAHW A119

MAHW A118

MAHW A117

MAHW A116

MAHW A115

MAHW A114

MAHW A113

MAHW A112

MAHW A111

MAHW A110

MAHW A109

MAHW A108

MAHW A107

IRON PIPE MAHW A128

MAHW A128

MAHW A127

MAHW A126

MAHW A125

MAHW A124

MAHW A123

MAHW A122

MAHW A121

MAHW A120

MAHW A119

MAHW A118

MAHW A117

MAHW A116

MAHW A115

MAHW A114

MAHW A113

MAHW A112

MAHW A111

MAHW A110

MAHW A109

MAHW A108

MAHW A107

MAHW A106

MAHW A105

MAHW A104

MAHW A103

MAHW A102

MAHW A101

MAHW A100

MAHW A99

MAHW A98

MAHW A97

MAHW A96

MAHW A95

MAHW A94

MAHW A93

MAHW A92

MAHW A91

MAHW A90

MAHW A89

MAHW A88

MAHW A87

MAHW A86

MAHW A85

MAHW A84

MAHW A83

MAHW A82

MAHW A81

MAHW A80

MAHW A79

MAHW A78

MAHW A77

MAHW A76

MAHW A75

MAHW A74

MAHW A73

MAHW A72

MAHW A71

MAHW A70

MAHW A69

MAHW A68

MAHW A67

MAHW A66

MAHW A65

MAHW A64

MAHW A63

MAHW A62

MAHW A61

MAHW A60

MAHW A59

MAHW A58

MAHW A57

MAHW A56

MAHW A55

MAHW A54

MAHW A53

MAHW A52

MAHW A51

MAHW A50

MAHW A49

MAHW A48

MAHW A47

MAHW A46

MAHW A45

MAHW A44

MAHW A43

MAHW A42

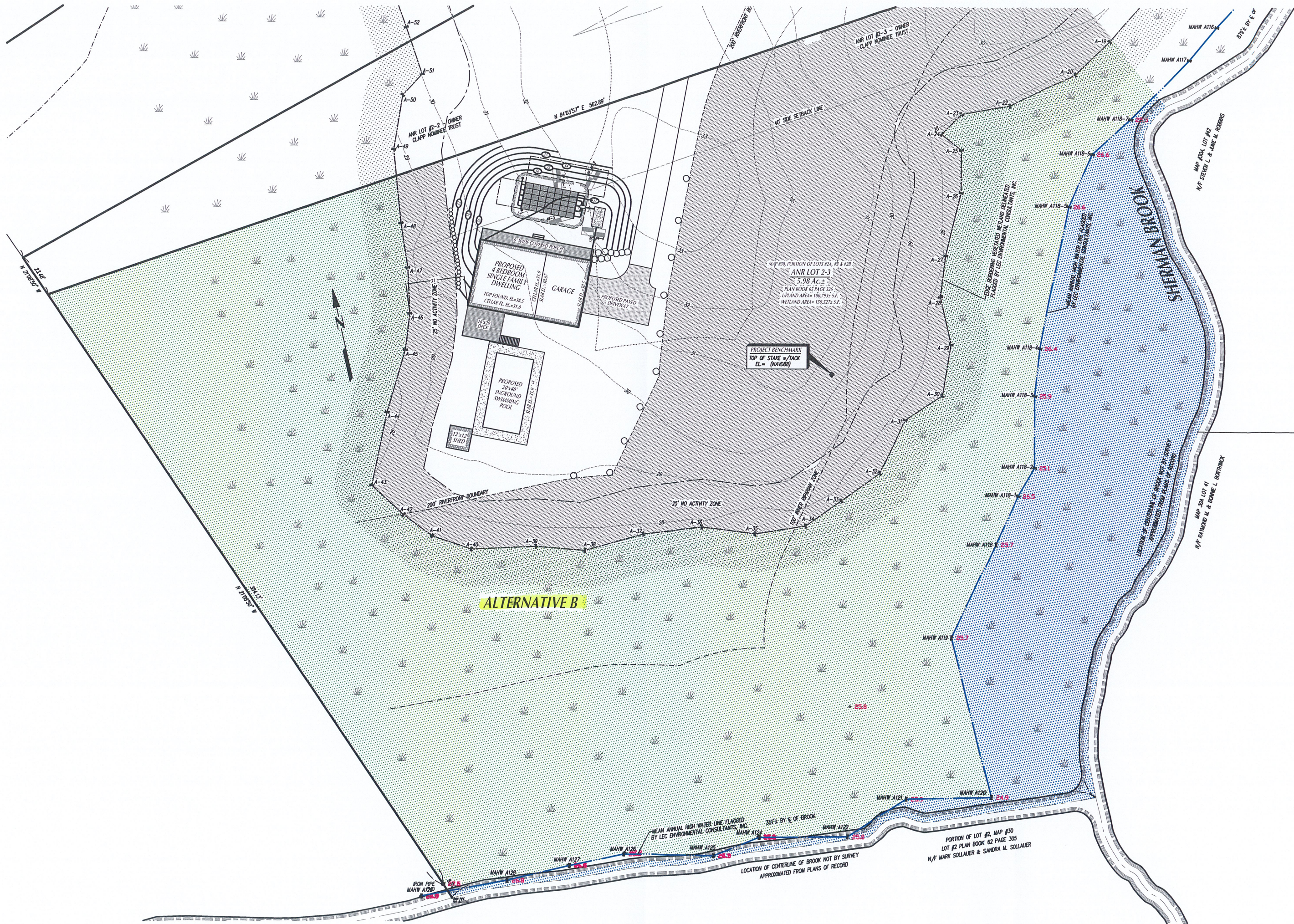
MAHW A41

MAHW A40

MAHW A39

MAHW A38

MAHW A37



ALTERNATIVE B

ANR LOT #2-2 - OWNER TRUST
CLAPP NUMBER

ANR LOT #2-3 - OWNER CLAPP NOMINEE TRUST

MAP #30, PORTION OF LOTS #2A, #3 & #2B
ANR LOT 2-3
5.98 AC.±
PLAN BOOK 62 PAGE 308
UPLAND AREA= 188,792± S.F.
WETLAND AREA= 159,527± S.F.

PROJECT BENCHMARK
TOP OF STAKE w/ TACK
EL. = (NAVD89)

EDGE OF OPENING REVEALED WETLAND DELINEATED PLACED BY LEC ENVIRONMENTAL CONSULTANTS, INC.

MAHW LINES WITH WATER TABLE PLACED BY LEC ENVIRONMENTAL CONSULTANTS, INC.

LOCATION OF CENTERLINE OF BROOK NOT BY SURVEY APPROXIMATED FROM PLANS OF RECORD

PORTION OF LOT #2, MAP #30
LOT #2 PLAN BOOK 62 PAGE 305
N/F MARK SOLLAUER & SANDRA M. SOLLAUER

MAP 30A LOT #1
N/F RAYMOND M. & BONNIE L. BOYNTON

MAP 30A LOT #2
N/F STEPHEN L. & JANE M. HERRING

MEAN ANNUAL HIGH WATER LINE FLAGGED BY LEC ENVIRONMENTAL CONSULTANTS, INC.

LOCATION OF CENTERLINE OF BROOK NOT BY SURVEY APPROXIMATED FROM PLANS OF RECORD

IRON PIPE
MAHW A120

MAHW A126

MAHW A127

MAHW A128

MAHW A129

MAHW A130

MAHW A131

MAHW A132

MAHW A133

MAHW A134

MAHW A135

MAHW A136

MAHW A137

MAHW A138

MAHW A139

MAHW A140

MAHW A141

MAHW A142

MAHW A143

MAHW A144

MAHW A145

MAHW A146

MAHW A147

MAHW A148

MAHW A149

MAHW A150

MAHW A151

MAHW A152

MAHW A153

MAHW A154

MAHW A155

MAHW A156

MAHW A157

MAHW A158

MAHW A159

MAHW A160

MAHW A161

MAHW A162

MAHW A163

MAHW A164

MAHW A165

MAHW A166

MAHW A167

MAHW A168

MAHW A169

MAHW A170

MAHW A171

MAHW A172

MAHW A173

MAHW A174

MAHW A175

MAHW A176

MAHW A177

MAHW A178

MAHW A179

MAHW A180

MAHW A181

MAHW A182

MAHW A183

MAHW A184

MAHW A185

MAHW A186

MAHW A187

MAHW A188

MAHW A189

MAHW A190

MAHW A191

MAHW A192

MAHW A193

MAHW A194

MAHW A195

MAHW A196

MAHW A197

MAHW A198

MAHW A199

MAHW A200

MAHW A201

MAHW A202

MAHW A203

MAHW A204

MAHW A205

MAHW A206

MAHW A207

MAHW A208

MAHW A209

MAHW A210

MAHW A211

MAHW A212

MAHW A213

MAHW A214

MAHW A215

MAHW A216

MAHW A217

MAHW A218

MAHW A219

MAHW A220

MAHW A221

MAHW A222

MAHW A223

MAHW A224

MAHW A225

MAHW A226

MAHW A227

MAHW A228

MAHW A229

MAHW A230

MAHW A231

MAHW A232

MAHW A233

MAHW A234

MAHW A235

MAHW A236

MAHW A237

MAHW A238

MAHW A239

MAHW A240

MAHW A241

MAHW A242

MAHW A243

MAHW A244

MAHW A245

MAHW A246

MAHW A247

MAHW A248

MAHW A249

MAHW A250

MAHW A251

MAHW A252

MAHW A253

MAHW A254

MAHW A255

MAHW A256

MAHW A257

MAHW A258

MAHW A259

MAHW A260

MAHW A261

MAHW A262

MAHW A263

MAHW A264

MAHW A265

MAHW A266

MAHW A267

MAHW A268

MAHW A269

MAHW A270

MAHW A271

MAHW A272

MAHW A273

MAHW A274

MAHW A275

MAHW A276

MAHW A277

MAHW A278

MAHW A279

MAHW A280

MAHW A281

MAHW A282

MAHW A283

MAHW A284

MAHW A285

MAHW A286

MAHW A287

MAHW A288

MAHW A289

MAHW A290

MAHW A291

MAHW A292

MAHW A293

MAHW A294

MAHW A295

MAHW A296

MAHW A297

MAHW A298

MAHW A299

MAHW A300

MAHW A301

MAHW A302

MAHW A303

MAHW A304

MAHW A305

MAHW A306

MAHW A307

MAHW A308

MAHW A309

MAHW A310

MAHW A311

MAHW A312

MAHW A313

MAHW A314

MAHW A315

MAHW A316

MAHW A317

MAHW A318

MAHW A319

MAHW A320

MAHW A321

MAHW A322

MAHW A323

MAHW A324

MAHW A325

MAHW A326

MAHW A327

MAHW A328

MAHW A329

MAHW A330

MAHW A331

MAHW A332

MAHW A333

MAHW A334

MAHW A335

MAHW A336

MAHW A337

MAHW A338

MAHW A339

MAHW A340

MAHW A341

MAHW A342

MAHW A343

MAHW A344

MAHW A345

MAHW A346

MAHW A347

MAHW A348

MAHW A349

MAHW A350

MAHW A351

MAHW A352

MAHW A353

MAHW A354

MAHW A355

MAHW A356

MAHW A357

MAHW A358

MAHW A359

MAHW A360

MAHW A361

MAHW A362

MAHW A363

MAHW A364

MAHW A365